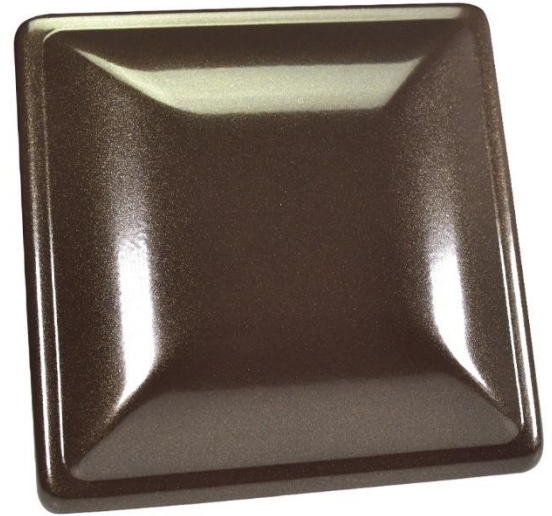


HONEY BRONZE M1681080

This is a smooth, high gloss bronze coating with fine bronze/gold metallic pearls.

This coating appears a silky bronze in the shadows, and its bronze/gold sparkles pops in the sunlight. This is a single stage coating, so there is no need for a base coat or clear coat!



FEATURES:

- Single stage coating (UV stable)
- Contains bronze/gold metallic pearls
- Great for both interior and exterior conditions
- Oil and fuel resistant
- Smooth, high gloss finish
- Salt Spray: 1000 hours pass (ASTM B-117)
- Recommended Bake: 10 Minutes @ 400°F Metal Temperature

SCAN FOR
MORE INFO



APPLICATIONS:

- Wheels both aluminum and steel
- Gas tanks
- Engine components (other than headers)
- Motorcycle/bike frames
- Appliance fixtures
- Farm/outdoor equipment
- Outside furniture
- Industrial parts (handrails, posts, etc.)
- And more

PURCHASE HIGHLIGHTS:

- Available in smaller quantities of 1-10 lb. packs and from 11-44 lb. boxes
- Larger purchases of 88+ lbs. with significant discounts

Shop all quality coatings, equipment, and more at:
www.columbiacoatings.com