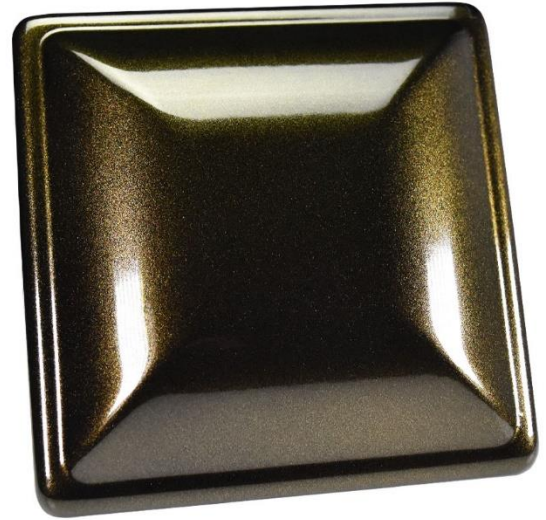


GOLDEN BRONZE **M1698078**

This is a deep, royal bronze coating with fine gold/yellow metallic pearls and a smooth, high-gloss finish.

This coating appears a mystic dark bronze in the shadows, and it pops in the sunlight. This is a single stage coating, so there is no need for a base coat or clear coat!



FEATURES:

- Single stage coating (UV stable)
- Oil and fuel resistant
- Excellent interior/exterior durability
- Contains gold/yellow metallic pearls
- Smooth, high-gloss finish
- Salt Spray: 1000 hours pass (ASTM B-117)
- Recommended Bake: 20 Minutes @ 375°F Metal Temperature

**SCAN FOR
MORE INFO**



APPLICATIONS:

- Wheels both aluminum and steel
- Gas tanks
- Engine components (other than headers)
- Motorcycle/bike frames
- Appliance fixtures
- Farm/outdoor equipment
- Outside furniture
- Industrial parts (handrails, posts, etc.)
- And more

PURCHASE HIGHLIGHTS:

- Available in smaller quantities of 1-10 lb. packs and from 11-44 lb. boxes
- Larger purchases of 88+ lbs. with significant discounts

Shop all quality coatings, equipment, and more at:
www.columbiacoatings.com